

Home report

3110 Southwest 30th Street, Gresham, Oregon 97080, United States



Total Area: 2664 sq. ft

Floor 1: 1601 sq. ft, Floor 2: 1063 sq. ft

Excluded: Garage 422 sq. ft, Outdoor Deck 628 sq. ft, Outdoor Porch 138 sq. ft, Embedded window 8 sq. ft, Storage 212 sq. ft

Property summary

 **2** Floors

 **4** Bedrooms

 **2** Bathrooms

Home report

3110 Southwest 30th Street, Gresham, Oregon 97080, United States



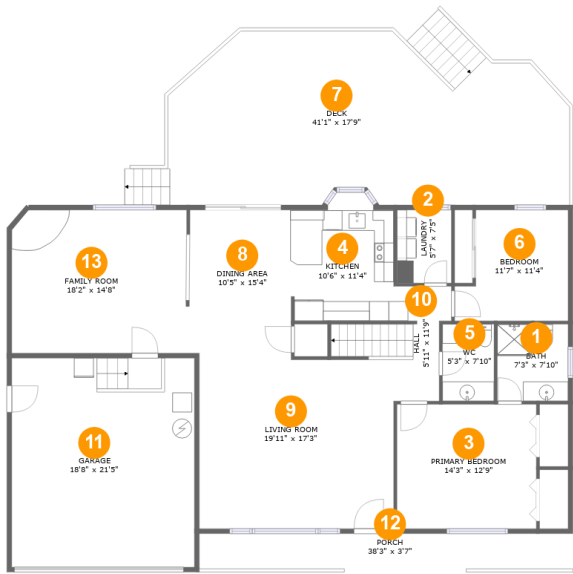
1
Half baths



1
Garages

Home report

3110 Southwest 30th Street, Gresham, Oregon 97080, United States



Room dimensions

Floor 1 Total:1601sqft Excluded: 1196sqft

#		Max Dimensions	sqft	Included
1	Bath	7'3" x 7'10"	56 sq. ft	Yes
2	Laundry	5'7" x 7'5"	42 sq. ft	Yes
3	Primary Bedroom	14'3" x 12'9"	182 sq. ft	Yes
4	Kitchen	10'6" x 11'4"	118 sq. ft	Yes
5	WC	5'3" x 7'10"	42 sq. ft	Yes
6	Bedroom	11'7" x 11'4"	115 sq. ft	Yes
7	Deck	41'1" x 17'9"	627 sq. ft	No
8	Dining Area	10'5" x 15'4"	160 sq. ft	Yes
9	Living Room	19'11" x 17'3"	366 sq. ft	Yes
10	Hall	5'11" x 11'9"	58 sq. ft	Yes
11	Garage	18'8" x 21'5"	400 sq. ft	No

Home report

3110 Southwest 30th Street, Gresham, Oregon 97080, United States

#		Max Dimensions	sqft	Included
12	Porch	38'3" x 3'7"	138 sq. ft	No
13	Family Room	18'2" x 14'8"	264 sq. ft	Yes

Home report

3110 Southwest 30th Street, Gresham, Oregon 97080, United States



Room dimensions

Floor 2 Total:1063sqft Excluded: 212sqft

#		Max Dimensions	sqft	Included
14	Sitting Room	12'2" x 21'1"	192 sq. ft	Yes
15	Storage	27'9" x 6'10"	190 sq. ft	No
16	Bedroom	16'7" x 21'1"	235 sq. ft	Yes
17	Bath	14'5" x 4'2"	60 sq. ft	Yes
18	Bedroom	14'1" x 21'11"	226 sq. ft	Yes
19	W.I.C.	10'7" x 6'2"	65 sq. ft	Yes
20	Hall	14'5" x 7'2"	104 sq. ft	Yes

3110 Southwest 30th Street, Gresham, Oregon 97080, United States

1 Floor 1 - Bath



Max Dimensions: 7'3" x 7'10"
Calculated Area: 56 sq. ft
Included: Yes

Heated: Yes
Finished: Yes
Enclosed: Yes
Contiguous: Yes
Permitted: Yes
Wet space: Yes
Addition: No
Conversion: No

2 Floor 1 - Laundry



Max Dimensions: 5'7" x 7'5"
Calculated Area: 42 sq. ft
Included: Yes

Heated: Yes
Finished: Yes
Enclosed: Yes
Contiguous: Yes
Permitted: Yes
Wet space: No
Addition: No
Conversion: No

3110 Southwest 30th Street, Gresham, Oregon 97080, United States

3 Floor 1 - Primary Bedroom



Max Dimensions: 14'3" x 12'9"
Calculated Area: 182 sq. ft
Included: Yes

Heated: Yes
Finished: Yes
Enclosed: Yes
Contiguous: Yes
Permitted: Yes
Wet space: No
Addition: No
Conversion: No

4 Floor 1 - Kitchen



Max Dimensions: 10'6" x 11'4"
Calculated Area: 118 sq. ft
Included: Yes

Heated: Yes
Finished: Yes
Enclosed: Yes
Contiguous: Yes
Permitted: Yes
Wet space: No
Addition: No
Conversion: No

5 Floor 1 - WC



Max Dimensions: 5'3" x 7'10"
Calculated Area: 42 sq. ft
Included: Yes

Heated: Yes
Finished: Yes
Enclosed: Yes
Contiguous: Yes
Permitted: Yes
Wet space: Yes
Addition: No
Conversion: No

3110 Southwest 30th Street, Gresham, Oregon 97080, United States

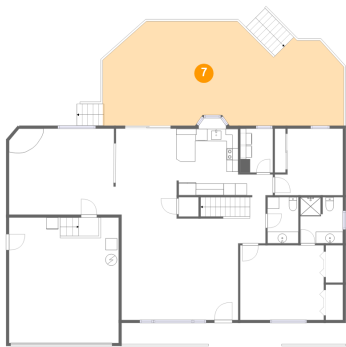
6 Floor 1 - Bedroom



Max Dimensions: 11'7" x 11'4"
Calculated Area: 115 sq. ft
Included: Yes

Heated: Yes
Finished: Yes
Enclosed: Yes
Contiguous: Yes
Permitted: Yes
Wet space: No
Addition: No
Conversion: No

7 Floor 1 - Deck



Max Dimensions: 41'1" x 17'9"
Calculated Area: 627 sq. ft
Included: No

Heated: No
Finished: Yes
Enclosed: No
Contiguous: Yes
Permitted: Yes
Wet space: No
Addition: No
Conversion: No

8 Floor 1 - Dining Area



Max Dimensions: 10'5" x 15'4"
Calculated Area: 160 sq. ft
Included: Yes

Heated: Yes
Finished: Yes
Enclosed: Yes
Contiguous: Yes
Permitted: Yes
Wet space: No
Addition: No
Conversion: No

3110 Southwest 30th Street, Gresham, Oregon 97080, United States

9 Floor 1 - Living Room



Max Dimensions: 19'11" x 17'3"
Calculated Area: 366 sq. ft
Included: Yes

Heated: Yes
Finished: Yes
Enclosed: Yes
Contiguous: Yes
Permitted: Yes
Wet space: No
Addition: No
Conversion: No

10 Floor 1 - Hall



Max Dimensions: 5'11" x 11'9"
Calculated Area: 58 sq. ft
Included: Yes

Heated: Yes
Finished: Yes
Enclosed: Yes
Contiguous: Yes
Permitted: Yes
Wet space: No
Addition: No
Conversion: No

11 Floor 1 - Garage

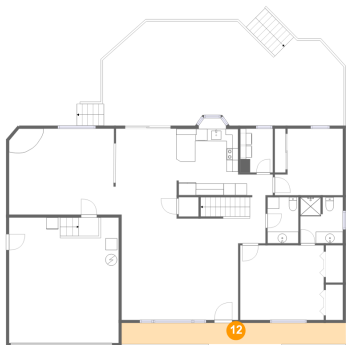


Max Dimensions: 18'8" x 21'5"
Calculated Area: 400 sq. ft
Included: No

Heated: No
Finished: No
Enclosed: Yes
Contiguous: Yes
Permitted: Yes
Wet space: No
Addition: No
Conversion: No

3110 Southwest 30th Street, Gresham, Oregon 97080, United States

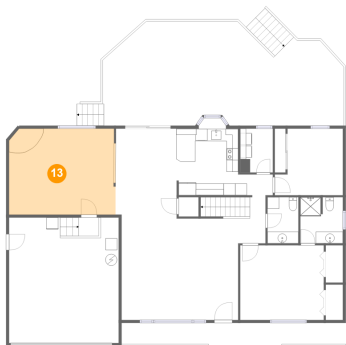
12 Floor 1 - Porch



Max Dimensions: 38'3" x 3'7"
Calculated Area: 138 sq. ft
Included: No

Heated: No
Finished: Yes
Enclosed: No
Contiguous: Yes
Permitted: Yes
Wet space: No
Addition: No
Conversion: No

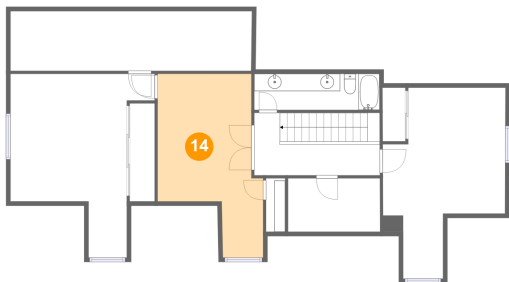
13 Floor 1 - Family Room



Max Dimensions: 18'2" x 14'8"
Calculated Area: 264 sq. ft
Included: Yes

Heated: Yes
Finished: Yes
Enclosed: Yes
Contiguous: Yes
Permitted: Yes
Wet space: No
Addition: No
Conversion: No

14 Floor 2 - Sitting Room

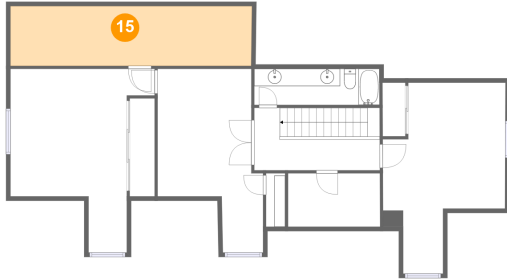


Max Dimensions: 12'2" x 21'1"
Calculated Area: 192 sq. ft
Included: Yes

Heated: Yes
Finished: Yes
Enclosed: Yes
Contiguous: Yes
Permitted: Yes
Wet space: No
Addition: No
Conversion: No

3110 Southwest 30th Street, Gresham, Oregon 97080, United States

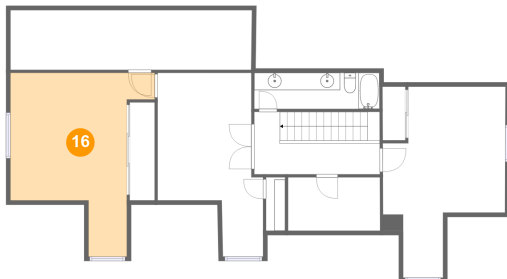
15 Floor 2 - Storage



Max Dimensions: 27'9" x 6'10"
Calculated Area: 190 sq. ft
Included: No

Heated: No
Finished: No
Enclosed: No
Contiguous: Yes
Permitted: Yes
Wet space: No
Addition: No
Conversion: No

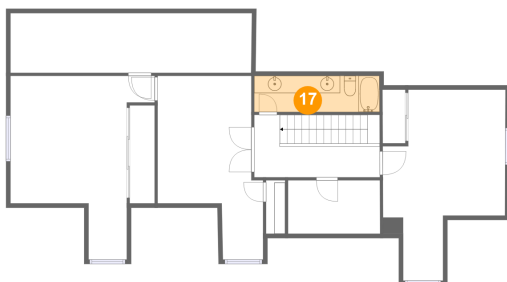
16 Floor 2 - Bedroom



Max Dimensions: 16'7" x 21'1"
Calculated Area: 235 sq. ft
Included: Yes

Heated: Yes
Finished: Yes
Enclosed: Yes
Contiguous: Yes
Permitted: Yes
Wet space: No
Addition: No
Conversion: No

17 Floor 2 - Bath

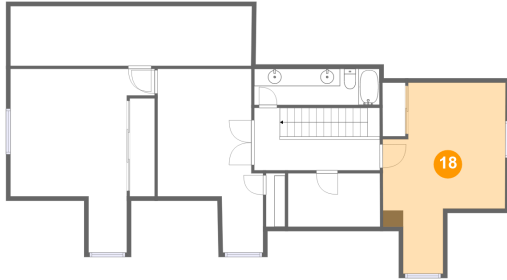


Max Dimensions: 14'5" x 4'2"
Calculated Area: 60 sq. ft
Included: Yes

Heated: Yes
Finished: Yes
Enclosed: Yes
Contiguous: Yes
Permitted: Yes
Wet space: Yes
Addition: No
Conversion: No

3110 Southwest 30th Street, Gresham, Oregon 97080, United States

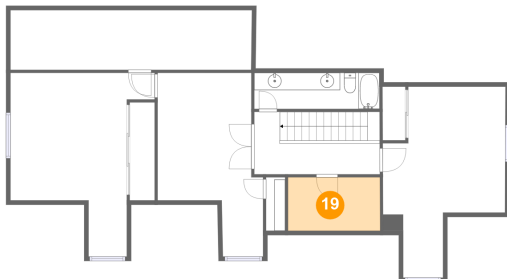
18 Floor 2 - Bedroom



Max Dimensions: 14'1" x 21'11"
Calculated Area: 226 sq. ft
Included: Yes

Heated: Yes
Finished: Yes
Enclosed: Yes
Contiguous: Yes
Permitted: Yes
Wet space: No
Addition: No
Conversion: No

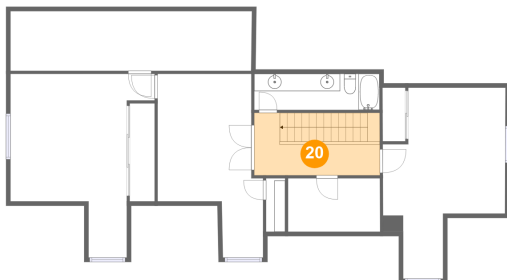
19 Floor 2 - W.I.C.



Max Dimensions: 10'7" x 6'2"
Calculated Area: 65 sq. ft
Included: Yes

Heated: Yes
Finished: Yes
Enclosed: Yes
Contiguous: Yes
Permitted: Yes
Wet space: No
Addition: No
Conversion: No

20 Floor 2 - Hall



Max Dimensions: 14'5" x 7'2"
Calculated Area: 104 sq. ft
Included: Yes

Heated: Yes
Finished: Yes
Enclosed: Yes
Contiguous: Yes
Permitted: Yes
Wet space: No
Addition: No
Conversion: No